



# GDAS NEWS

## NEXT MEETING

**Thursday**  
**11 September, 10am**  
 at the ART STUDIO,  
 2 Bourke St, Goulburn

## GOULBURN & DISTRICT ART SOCIETY INC.

📍 The Art Studio, The Old Council  
 Depot, Cnr Combermere &  
 Bourke Sts, Goulburn

✉ PO Box 71 Goulburn NSW 2580

🌐 [www.artsociety.goulburn.net.au](http://www.artsociety.goulburn.net.au)

📧 [goulburnartsociety@gmail.com](mailto:goulburnartsociety@gmail.com)

📘 @goulburnanddistrictartsociety

📷 @goulburnanddistrictartsociety

### COMMITTEE

**President** Helen De Jonge

**Vice President** Susan Harris

**Secretary** Margaret Parry

**Treasurer** Gail Davies

### 4 Committee members

Alex Mortensen, Ekaterina  
 Mortensen, Michael Sherriff,  
 Judith Dimitrov

### PORTFOLIO HOLDERS

**Ass't Secretary** Sue Maas

**Ass't Treasurer** Casual Vacancy

**Minutes Secretary** Julia Laybutt

**Ass't Minutes Secretary** Sue Maas

**Membership Secretary** Sue Maas

**Public Officer** Bryce Ronning

**Newsletter Editor** Alex Mortensen

**Web Master & Graphic Designer**

Katya Mortensen

**Workshop Coordinator** Susan Harris

**Publicity** Casual Vacancy

**Social Media Coordinator**

Judith Dimitrov

**Sports Council Delegate**

Judith Dimitrov

Our Constitution - download at

[https://www.fairtrading.nsw.gov.au/\\_data/assets/word\\_](https://www.fairtrading.nsw.gov.au/_data/assets/word_)

[doc/0020/1143605/Model-Constitution-](https://www.fairtrading.nsw.gov.au/_data/assets/word_doc/0020/1143605/Model-Constitution-for-Associations-2024-5-31.docx)

[for-Associations-2024-5-31.docx](https://www.fairtrading.nsw.gov.au/_data/assets/word_doc/0020/1143605/Model-Constitution-for-Associations-2024-5-31.docx)



Sketchbook workshop with Amanda McLean on 9th August 2025.

## PRESIDENT'S REPORT

Hello Everyone,

Once again it is getting close to our Goulburn Workers Club Annual Art Prize. The subcommittee has been meeting every month to organise and plan the Art Prize. This year we have two judges, Mark Poisson and Amanda McLean, both are very good artists with many years of experience.

The Crescent School will receive the proceeds of the raffle again this year. We'll be selling tickets during the exhibition. We will have a merchandise table so if any members would like to display their art work on the table, they have to be there at the table during opening times.

I hope all members will have lots of paintings to enter in the exhibition. You need to have your entry forms in by the 12th September. Late entries will not be accepted, so get your entry form in now, please.

Happy painting,  
 Helen

**WOULD YOU LIKE TO DONATE ONE OF  
YOUR PAINTINGS FOR OUR ANNUAL  
EXHIBITION RAFFLE?**

Please contact Sue Maas on 0418 275 402

## EDITORIAL

Our August Committee Meeting approved the GDAS participation in the art sessions at the Community Centre and wants members to volunteer to assist with the sessions. It will be good to see this happening as it is a worthwhile activity for us plus it may produce excellent publicity for our organisation and may well attract new members. You can read more about this in the next column and page 7. Our exhibition subcommittee has been active and now has two judges. They sent out letters to over 20 local businesses requesting their sponsorship hoping it will result in more funds for prizes and running of the exhibition. If you know businesses or individuals who may be interested in being a sponsor either please chat to them about it or tell Susan Harris their names. Any size donation, small or large, is welcome.

Thank you to those who contributed to this issue.

*Alex Mortensen*

## FROM VICE PRESIDENT & EXHIBITION COORDINATOR

Members, what are your thoughts on having the choice of 1 or 2 days workshops from visiting artists. Some members and non-members find 2 days workshops difficult to deal with being tied up for two days and also the financial aspect. It would require some number crunching on my behalf. Please let me know what you think about it.

This is just an example: If we were charging \$170 for 2 days I thought perhaps \$100 for 1 day – so a little more expensive to have a one day workshop but somewhat cheaper than having a day workshop.

I would still have to speak with the tutors as to whether they would be willing to do just one day.

Margaret has given a written report on Amanda McLean's workshop but I will include an example of what the members could achieve if they attend the next Amanda McLean workshop in 2026. Amanda's exquisite drawings are done with ink pens and pastels on/in small art journals which she is going to show us how to make our own.

*Susan Harris*



## PAINTING DONATIONS FOR THE ANNUAL EXHIBITION RAFFLE

The Goulburn Workers Club Annual Art Prize, 2025, is approximately six weeks away. During the three days of the exhibition, a raffle is run with all proceeds going to The Crescent School of Goulburn.

The Exhibition Subcommittee would like to know if there are any members who would be willing to donate a painting for the raffle. Two paintings would be great, so we have first and second prize. (Not necessary that one person donate both). If you feel you would like to donate, please let us know as soon as possible.

We thank you in advance for your support.

*Sue Maas,*

Assistant secretary GDAS

0418275402



Image: Raffle painting at 2018 AAP exhibition.

## MOTIONS WERE PASSED AT THE AUGUST COMMITTEE MEETING

1. That the GDAS take an active part along with the Goulburn Mulwaree Council in the Community Workshop art days for Seniors.
2. We draw up a roster of volunteers for members to assist Judith in this activity held on the first Monday each month. Please add your name to the roster as it will assist Judith to know who will take part with her. See Judith's item on page 7 in this newsletter and advise Judith which dates will suit you.
3. If GDAS members want to display and sell any art items on the merchandise table they must do the manning of it – otherwise they cannot display such work.

So please be aware of this and be prepared to man the display if you wish to exhibit work on the merchandise table.



## THE GOULBURN WORKERS CLUB ANNUAL ART PRIZE IS GETTING CLOSE

The Art Prize always attracts a large number of entries from highly skilled artists and photographers.

The prize moneys are very attractive in all the sections. It is a wonderful opportunity to display and sell your work in a great venue.

This year we have a new Goulburn Heritage prize to be selected from any listed sections and sponsored by Top Shot Printing + Framing that will definitely attract more artists participating in this challenge.

Please read carefully terms and conditions on the entry form online: [http://www.artsociety.goulburn.net.au/pdfs/AAP25\\_entry\\_form\\_F.pdf](http://www.artsociety.goulburn.net.au/pdfs/AAP25_entry_form_F.pdf)

The entries are due 12 September. No late entries are accepted.



## KEY ROSTER FOR STUDIO PAINTING DAYS 2025

**Open 9.30am for 10am - 2pm**

Please take rubbish & leave studio in good order. Please arrange with another key holder if you cannot attend.

- Key #2 Katya Mortensen** (0423 172 342)  
August 28, November 6
- Key #3 Helen De Jonge** (0412 185 019)  
September 25, December 4
- Key #4 Bryce Ronning** (Marcia's 0400 383 203)  
September 18, November 27
- Key #5 Judith Dimitrov** (0430 380 429)  
Oct 16
- Key #6 Earl Garth** (0432 583 265)  
October 2, December 18
- Key #7 Susan Harris** (0415 531 992)  
October 30
- Key #8 Sue Maas** (0418 275 402)  
October 23
- Key #9 Susan Pearson** (0409 500 166)  
September 4, November 20

## EASEL DONATION

GDAS is very grateful for the large easel donated by one of the artists of Gallery on Track and delivered to us this month. See the image for the size of the easel. Thank you ever so much.



## WOLLONDILLY GARDENS

Wollondilly Gardens Retirement Village is very willing to hang artists' works in their newly painted recreation hall. The paintings will need to have suitable hanging fixtures and possibly a chain or such, as they will be hung from a picture rail. Your paintings can be for sale, you just need to have a small card beside the artwork with your details on it. If you are interested in this project, please contact – Vivian Hales at Wollondilly Gardens, or Margaret Parry, fellow GDAS member and resident of Wollondilly Gardens.



**EXHIBIT AT THE LOADED DOG HOTEL, TARAGO - A WONDERFUL OPPORTUNITY**  
**THANK YOU TO TIM & ALANNA!**





# GDAS WORKSHOPS 2025

## FEBRUARY

**1st February**

KATYA MORTENSEN

**INTRODUCTION TO ACRYLICS**

Member \$10; Non Member \$40



**22nd February**

SUSAN PEARSON

**INTRODUCTION TO PORTRAITURE WITH WATERCOLOUR**

Member \$10; Non Member \$40



## MARCH

**8th March**

AMANDA ZUREK

**INTRODUCTION TO PASTELS**

Member \$10; Non Member \$40



## APRIL

**5th April**

HELEN DE JONGE

**INTRODUCTION TO WATERCOLOUR**

Member \$10; Non Member \$40



**12th April**

PETER WALE

**DRAWING & PAINTING WITH LINE AND WASH**

Member \$75; Non Member \$115



## AUGUST

**9th & 10th August**

AMANDA MCLEAN

**THE GENTLE WAY TO SKETCHBOOKING**

Member \$170; Non Member \$210



## SEPTEMBER

**13th September**

EV HALES

**WATERCOLOUR WORKSHOP**

Cost: \$120



## OCTOBER

**11th & 12th October**

GRACE PALEG

**PASTEL & GOLD LEAF**

Member \$150

Non Member \$190



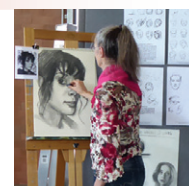
## NOVEMBER

**1st November**

KATYA MORTENSEN

**INTRODUCTION TO GRAPHITE & CHARCOAL**

Member \$10; Non Member \$40



**15th & 16th November**

TONY BELOBRAJDICK

**GRAPHITE, WASH & WATERCOLOUR**

Member \$160; Non Member \$200



To reserve your place in any of the workshops, please contact our Workshop Coordinator, Susan Harris, email [sushar47@gmail.com](mailto:sushar47@gmail.com) or phone **0415 531 992**

### DIRECT DEPOSIT:

BENDIGO BANK BSB 633-000,

Acc. No. 200104032,

Acc. Name: Goulburn & District Art Society Inc,

Reference: [Surname, Initials] for [name of workshop tutor].

- All workshops are from 10am to 4pm at the GDAS Art Studio unless specified otherwise.
- Payments need to be paid in full when reserving your place in workshops.
- See GDAS WORKSHOPS PAYMENT & REFUND POLICY on our website [http://www.artsociety.goulburn.net.au/pdfs/Payment\\_and\\_Refund\\_Policy.pdf](http://www.artsociety.goulburn.net.au/pdfs/Payment_and_Refund_Policy.pdf)





## AMANDA MCLEAN SKETCHBOOK WORKSHOP

9th – 10th August

Amanda's workshop has to be one of the most delightful and inspiring workshops that the magnificent seven attended. We can't begin to tell how fascinating and rewarding these two days were. For those of you who debated will I or won't I – say YES to next time (Amanda is coming back in 2026). It was all about stepping out of your comfort zone and letting the right side of your brain 'engage'. Drawing blind without looking at the specific object and not lifting your pen as you creatively move your pen on the page. Once done then draw the same subject (modified drawing) looking intermittently at the object. In my case the freshness of the blind drawing far exceeded the modified drawing. We were taught how to create texture with layers of hatching, stipple and other strokes. How to draw carrot and blob people to effectively include in a drawing. Perspective using a clock face to work out angles – easy for some! Use of Posca pens for etching and using gouache. All this is done in your own personal work journal as you engage more in a very interesting journey – portable, rewarding, infectious because you don't want to stop.

Marg Parry



## VISITING BDAS

This week Alex and I visited BDAS Gallery. At the moment they are having a Southern Highlands Textile & Fibre Network Inc. exhibition held annually in August – September. The skilfully executed works are very impressive with their variety and versatility. We talked to several members of the textile group. Their membership is just above 30 members including some of Goulburn's craft group from the Gallery on Track.

Below there is an image of very labor consuming and artistic work with the cat. While we were there talking to people it was sold.

Numerous garments were very appropriate for the cold of winter.

Their gallery has great lighting and plenty of space for displaying art.

We couldn't resist looking into their spacious workshops areas that were in action.

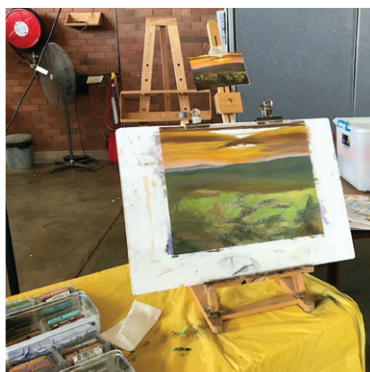
Further info please contact [shtfninfo@gmail.com](mailto:shtfninfo@gmail.com)





## THURSDAY PAINTING DAYS

24th July, 1st  
August, 7th August,  
21st August



## ART IN MINIATURE

27 Aug - 21 Sep 2025

Visitor Centre, Australian  
National Botanic Gardens  
Clunies Ross St, Acton ACT

Official opening and meet the  
artists Sat 30 Aug, 2pm.  
110 miniatures by 20 artists.

[artinminiature.wordpress.com](http://artinminiature.wordpress.com)





## THE COMMUNITY ARTS PROJECT

The Community Arts Project continues for Seniors at the Goulburn Community Centre on the first Monday of every month. We are looking for volunteers to help with the workshop from about 9:30am to 11:30am. The participants are almost all beginners in various stages. One thing they have in common is they enjoy the workshop and are appreciative of the Art Society's contribution.

We are working exclusively with acrylic paint and pens. If you can give a demonstration or help with set up and clean up I'd love to hear from you. (Alex & Katya are on roster for 1st September.)

Please text or phone Judith Dimitrov on 0430 380 429.



## GREAT LAKES ART SOCIETY



Their GLAS newsletter has been forwarded to our members. GLAS members certainly have a very busy time and have just recently welcomed 21 new members. Congratulations to them on achieving this. If you visit Forster at some time, it's well worthwhile to visit them and please make yourself known as a GDAS member. Do the same at any town where there's an art society. We always find it interesting to do so and are always warmly welcomed.

Ten participants recently enjoyed reimagining watercolours creating several landscapes using sketchbook interpretations provided as references by Tutor Julie Simmons. Here's a photo of their creativity during the weekend.



## SKY AND SEA IN PAINT & POETRY

### The Exhibition by Arlene Williams and Tony Steven Williams

The Front Cafe & Gallery in the Lyneham Shops

September 1-14, 2025

Open 7am to 2pm on weekdays and 8am to 2pm on weekends.

Opening on Friday September 5 (6-8pm).



## CANBERRA ARTISTS WORKSHOPS

The Art of Still Life with Chelsea Lehmann, Nov 15-16, \$341

<https://canberraartworkshop.org.au/workshops/>



IF YOU HAVE SEEN AN  
ART EXHIBITION PLEASE  
LET US KNOW ABOUT IT

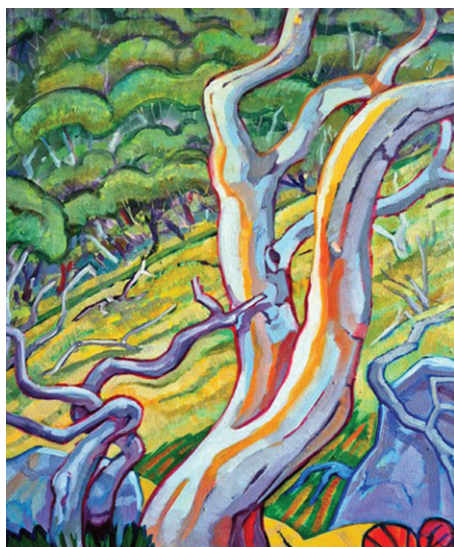




## BUNGENDORE ART GALLERY

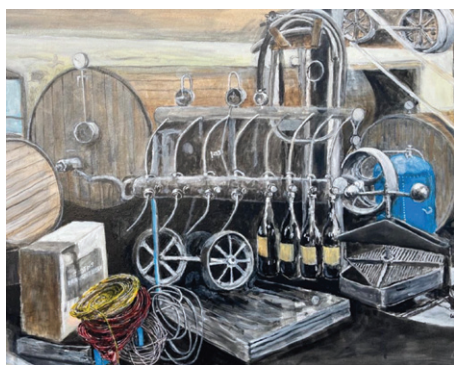
Sep – Oct Exhibition  
**GLIMPSES OF LAND & SEA**  
featuring Val Johnson F.R.A.S.

Opening 6 Sep  
Open 10am – 4.30pm Fri – Mon  
42b Ellendon St, Bungendore  
<https://www.bungendorefineart.com.au>



## CHARLES WEYMAN, PAINTINGS & DRAWINGS

The Goulburn Club  
9 August – 5 October 2025  
19 Market St, Goulburn  
For opening hours visit  
[www.goulburnclub.com.au](http://www.goulburnclub.com.au)



## INAUGURAL BUNDANOON PORTRAIT PRIZE AND EXHIBITION 2026

**\$4,400 Total Prize Money**

6th–20th March 2026 at the  
White Gallery, Bundanoon, with  
a gala opening on 6th March  
from 6–8pm

Entries open: 1st August 2025,  
\$30 per entry  
Entries close: 1st February 2026  
Opening Gala Night: 6th March  
2026, 6–8pm

More info and entry form:  
<https://www.artsbundanoon.org.au/portraitprize>



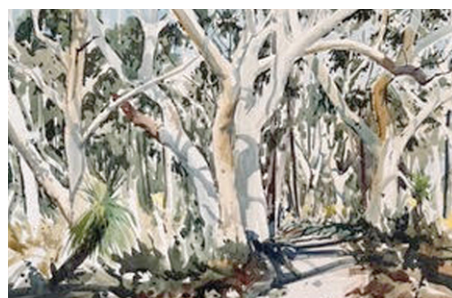
## BowralARTGallery

## CALLING FOR ENTRIES

**Tim Copes Watercolour Prize  
2025, 20 Sep – 6 Oct**

Opening Fri 19 Sep at 6pm  
Bowral Art Gallery, 1 Short St  
Bowral

Information and entry form  
[www.bdasgallery.com/entryforms](http://www.bdasgallery.com/entryforms) or phone 4861 4093



## EVENING LIFE DRAWING GROUP

Starting Wed 13/8, 6:30 – 9:00,  
there will be an interim long  
pose painting/drawing group on  
Wednesdays. Please email me,  
Sandra at [cocosolo3@me.com](mailto:cocosolo3@me.com) if  
you would like to attend. Please  
include your mobile number in  
case of cancellations.



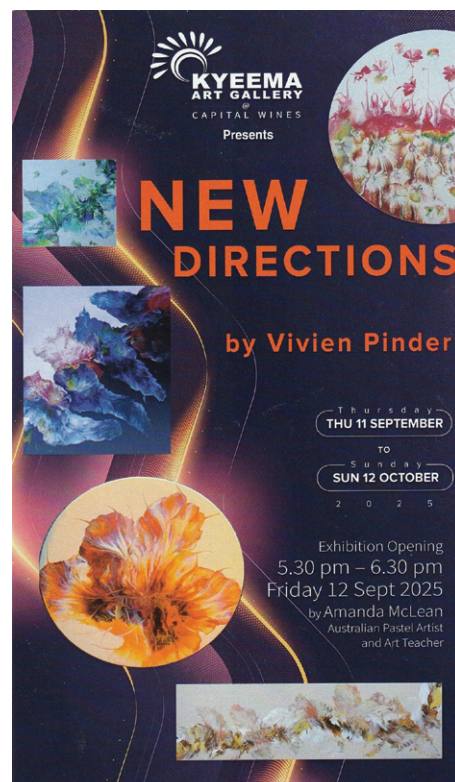
A QAS member, **Viv Pinder**, is  
holding her first solo exhibition  
**NEW DIRECTIONS**.

**Thu 11 Sep – Sun 12 Oct**

Opening Fri 12 Sep, 5.30pm–  
6.30pm by Amanda McLean

Capital Wines and Kyeema Art  
Gallery, 13 Gladstone St Hall ACT

[info@capitalwines.com.au](mailto:info@capitalwines.com.au)  
[www.capitalwines.com](http://www.capitalwines.com)





## PLEASE SUPPORT OUR GENEROUS SPONSORS

The GDAS has numerous sponsors who give us a variety of forms of sponsorship that is of great assistance to the running of our organisation throughout the year and our annual exhibition. We thank them all.



**THE WORKERS CLUB  
SPORTS COUNCIL**



**ANDREW LIN  
DENTIST**

**PAUL  
O'ROURKE**



**THANK YOU**  
**TO ALL OUR SPONSORS FOR YOUR GENEROUS SUPPORT**

**SPONSORS ARE WELCOME!**

## WHEN BUYING AT MITRE 10

When you buy at Mitre 10 you can receive a 10% discount on various items by telling the checkout staff you are a member of the Goulburn & District Art Society and that **the art society has a cash card account**. Mitre 10 is sponsoring the GDAS and appreciates business that you carry out with it.

## PAYMENTS TO GDAS

**Bendigo Bank BSB 633-000 Acc. No 200104032**  
**Acc. name: Goulburn & District Art Society Inc, REFERENCE: SURNAME + INITIALS**  
Alternatively post a cheque to The Treasurer, GDAS, P.O. Box 71 Goulburn NSW 2580

